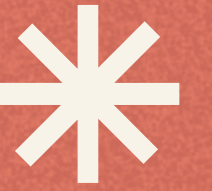


# BELONGINGS



## SCHOOL INFO PACK

By Tangled Feet and Rowan Tree  
For 7-11 year olds

**Director:** Nathan Curry (Co-Artistic Director of Tangled Feet)  
**Dramaturgy/Writer in the Room:** Shireen Mula (Theatre503, Secret Cinema, Park Theatre)  
**Design:** Becky-Dee Trevenen (Punchdrunk's Head of Dressing)  
**Sound and Music:** Guy Connelly (of band Clock Opera)  
**Lighting Design:** Sarah Readman







## ABOUT THE SHOW

We are all trying to work out our story? Who are we? How are we shaped? Sometimes you have to find the courage to be you.

Cleo arrives into a new home, unsure of what the future holds. She meets the playful Bertie, who brings her out of her shell, and Leila who she has more in common with than she first thought. Cleo is searching for some answers, Bertie is looking for the future and Leila is desperate to reconnect with her sister.

Life has been unsettled for the trio; together they balance, dance and climb to navigate imagined worlds, divided loyalties and loved ones far away. They unite to find a place called home, learning the value in others but, most importantly, themselves.

This wholehearted production, inspired by working with young people in care, explores a fundamental need we all share - the need to belong.

Nominated for Two Off West End Awards  
(Best Production, Best Performance by an Ensemble).





**BELONGINGS**

**TANGLED FEET**

# THEMES

Belongings shines a light on the children in the care system or those growing up with insecure housing and home lives. The performance elicits empathy from children for other children's situations, it explores difference and shows, through friendship, play and talking about your feelings children can show great resilience. The piece is perfect for Years 2-6 and touches on well-being, mental health, PSHE and inclusivity.

A resource Pack accompanies the production  
<https://tangledfeet.com/files/Belongings%20Resource%20Pack%20v3.pdf> and post show workshops are available





# FEEDBACK \*

"It makes you open minded" 9 year-old child

"Thank you, I felt what you felt" 10 year-old child

"It reached my heart" 8 year-old child

"It really displayed about the feelings of living in care. Thank you." Child

"Thank you for doing this for me" Child

"Thank you for transporting us to another world, for allowing us to explore complex emotions in a safe space." Teacher

"Every school needs to see this production" Teacher

"It gave me so much to think about and take back into school" Teacher

"The best thing I've seen in 28 years of teaching" Teacher

"The pupils and staff haven't stopped telling me about how inspired and moved they were." Teacher

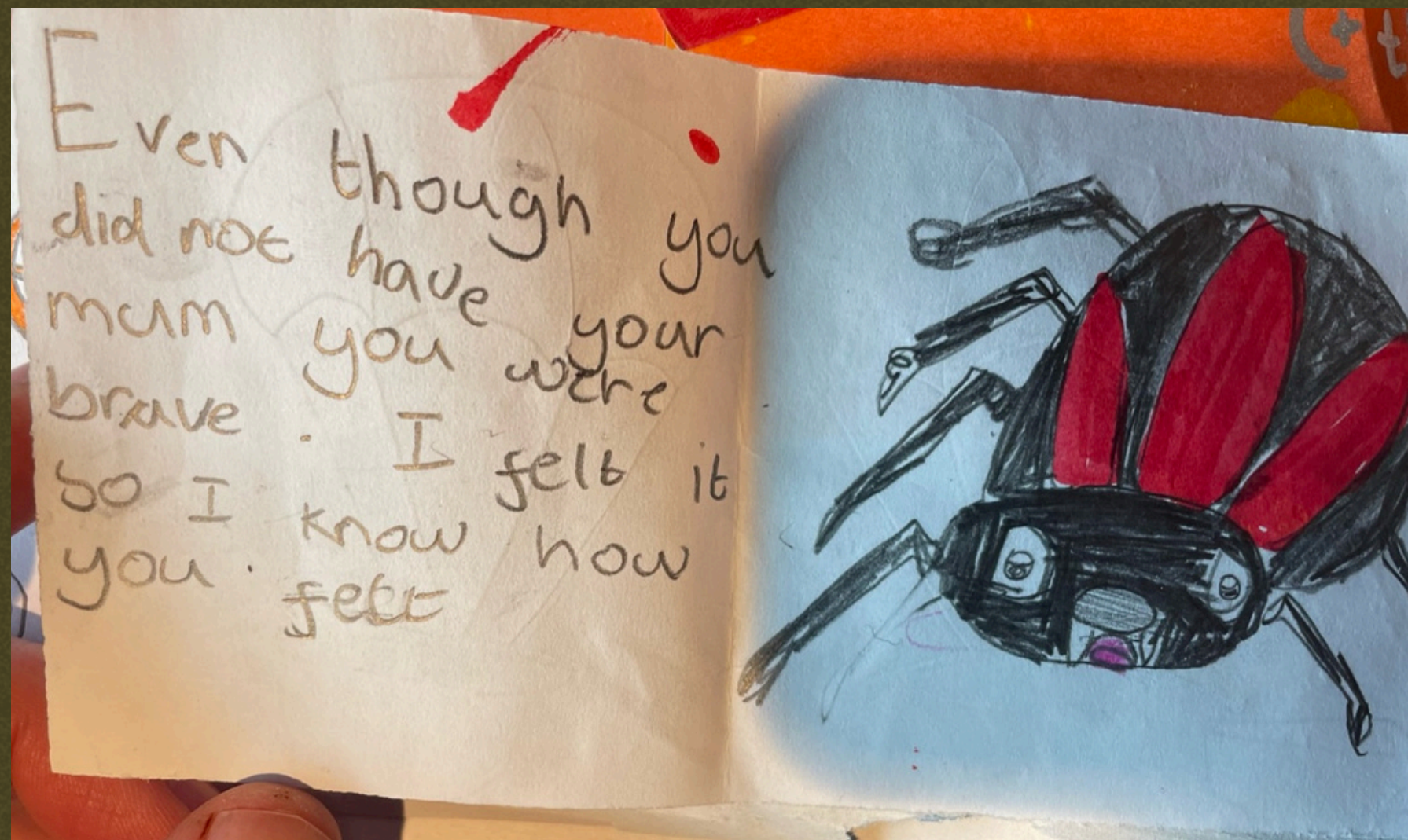
Wow! I cannot express what an impact Belongings had on our children and staff. This is especially so for the children we have in care. They were bursting to tell us how they related to the characters and it has enabled them to communicate with their teachers and friends about their home situations more openly. The other children now have much more understanding of children in care and how their lives are different from their own." Teacher

"We laughed and cried along with the characters. The subject is something that not many children know about, which makes it so important for them to understand and this really brought the setting to life. We were able to have some in depth discussions when we got back to class and the children who have had similar life experiences felt so proud and pleased that we were discussing it. There was so much joy at the end, and the children loved the chance to get up and join in with the people they had been watching. Thank you for giving us such a remarkable starting point for discussing what could otherwise be a very difficult subject." Teacher



BELONGINGS

TANGLED FEET



BRILLIANT!  
I BROUGHT MY  
SON WHO WAS  
IN CARE AS A  
BABY AND IT  
WILL HELP US  
START UP MANY  
CONVERSATIONS.



The thing that made me happy is they  
became sisters

The thing that made me upset is the dad  
mine is not my life.  
but I got other people in my life  
like Lee has 61 and Logan 30

The people that were there for me is  
theo, miss Ali and my mum.



## BELONGINGS

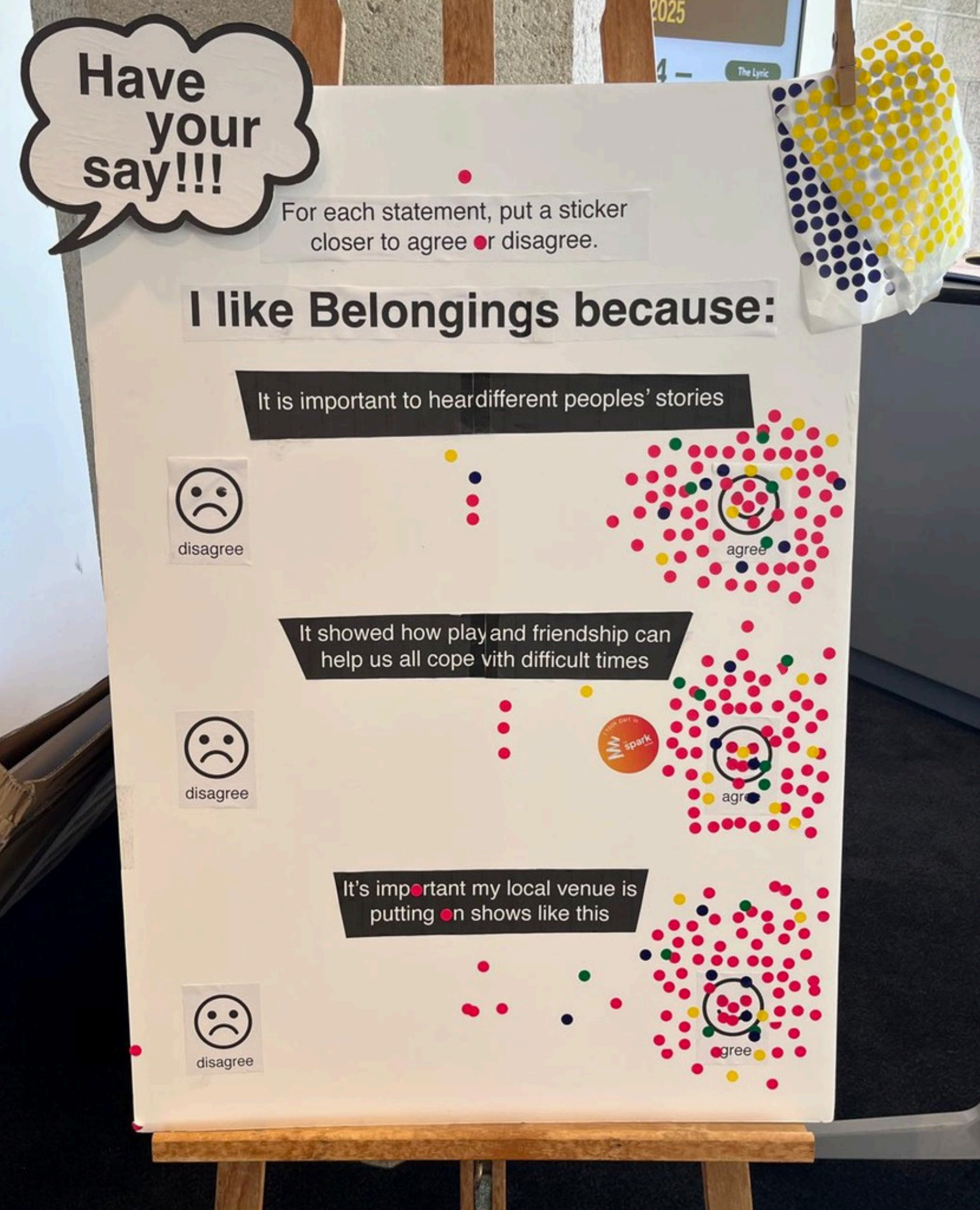
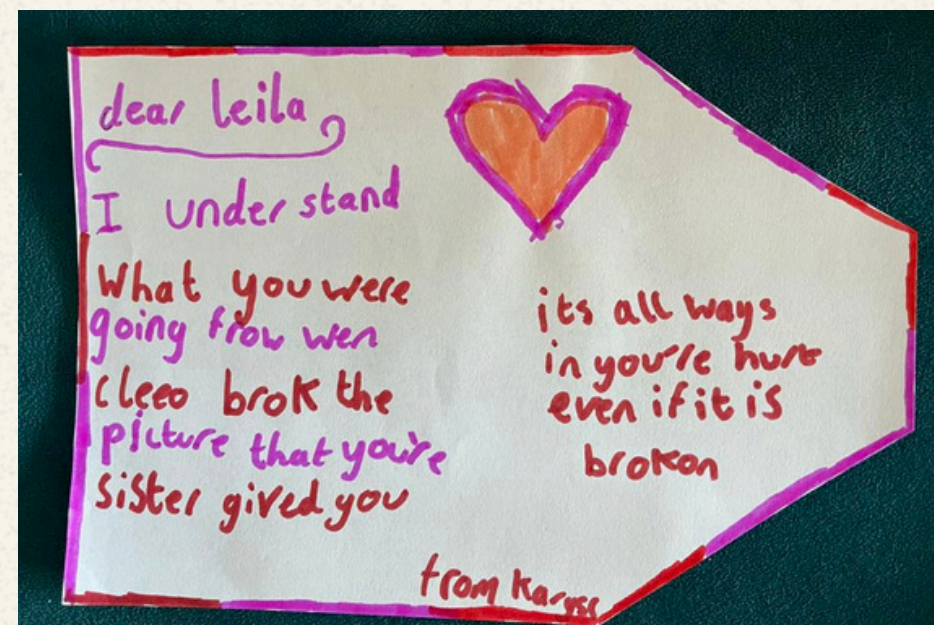
## TANGLED FEET

"It meant so much (for my foster boys) to feel represented, understood, authentic and beautiful as well as sad at times. Knowing their story and that of others we have cared for we could see how truly therapeutic this show was and it led to very valuable conversations afterwards." Foster parent

"Our discussions showed that the children had a good understanding of the themes visited and the resulting conversations were amazing, relevant and thoughtful." Teacher

"The show itself was one of the most beautiful productions we have seen and that is a statement very much agreed upon by staff. The themes were introduced with delicacy and at the perfect level for our year 3 and 4 children." Teacher

"You could really feel the emotions of the characters. It showed the emotional struggles some children have to go through." Y6 student





BELONGINGS

TANGLED FEET

# LOGISTICS

Our Production is completely self-contained, we have the following requirements to make the show work in your space.

- Minimum performance area requirement: 7 x 7 meters
- We can perform to up to 140 children depending on size of space for audience
- The room must have a height of at least 4m.
- The performance area must be level (not sloped/raked)
- We must have access to at least 2 x 13amp (domestic style) sockets.
- One table around 1m-2m long
- The show runs 65 minutes
- We tour our own speakers. We tour 4 floor stands with lighting which will need to be plugged into two 13amp (domestic) sockets.
- All toured LX and practical elements are PAT tested.
- All team members will be DBS checked
- We need one (1) dedicated person to help us unload the van and show us where everything is, assist with Parking etc. (if no help available we will need to increase charge by £150)
- A place for the cast to get changed



## Schedule Example

- 07:30 Arrival
- 07:35 Get in and set up
- 09:30 Show
- 10:30 End or prepare for afternoon show (earliest time show 2 time 12.30pm)
- 11:45 Depart if only 1 show or workshop with children

## Fee and contact

£550 plus VAT per day (up to 2 shows a day). (please note the true cost of show is £1750 and Tangled Feet us their own funding and fundraising to subsidise it)

Emily Eversden [emily@tangledfeet.com](mailto:emily@tangledfeet.com) / 07834857564



BELONGINGS

TANGLED FEET

## ABOUT TANGLED FEET

Tangled Feet are a physical theatre ensemble dedicated to devising original, accessible, and innovative work based in Luton. Since 2003, they have made transformative theatre in public spaces, found spaces, educational spaces and theatre buildings. They are part of the Arts Council's Portfolio of core funded companies.

[www.tangledfeet.com](http://www.tangledfeet.com)

## ABOUT ROWAN TREE

Rowan Tree Dramatherapy is an organisation that provides dramatherapy to young people & adults across Kent, including for groups of young people in care.



### Trailer

<https://www.youtube.com/watch?v=GGEV8LtJ5eo>

### Full Show — LINKS

<https://vimeo.com/tangledfeettheatre/belongingsfullplay>

### Big Issue Article

<https://www.bigissue.com/culture/theatre/meet-the-young-care-experienced-theatre-makers-breaking-stereotypes-this-care-day>

### Further Press:

<https://tangledfeet.com/about/press-coverage>

**Tangled Feet are signed up to the Anti Racism Touring Rider and Equity's Safe Spaces Statement. All Tangled Feet Policies:**

<https://tangledfeet.com/about/our-policies>