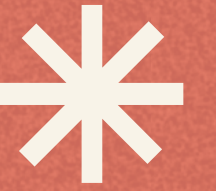


BELONGINGS



By Tangled Feet and
Rowan Tree
For 7-12 year olds

Director: Nathan Curry (Co-Artistic Director of Tangled Feet)
Dramaturgy/Writer in the Room: Shireen Mula (Theatre503, Secret Cinema, Park Theatre)
Design: Becky-Dee Trevenen (Punchdrunk's Head of Dressing)
Sound and Music: Guy Connelly (of band Clock Opera)
Lighting Design: Sarah Readman



BELONGINGS

TANGLED FEET



We are all trying to work out our story? Who are we? How are we shaped? Sometimes you have to find the courage to be you.

Cleo arrives into a new home, unsure of what the future holds. She meets the playful Bertie, who brings her out of her shell, and Leila who she has more in common with than she first thought. Cleo is searching for some answers, Bertie is looking for the future and Leila is desperate to reconnect with her sister.

Life has been unsettled for the trio; together they balance, dance and climb to navigate imagined worlds, divided loyalties and loved ones far away. They unite to find a place called home, learning the value in others but, most importantly, themselves.

This wholehearted production, inspired by working with young people in care, explores a fundamental need we all share - the need to belong.

Nominated for Two Off West End Awards (Best Production, Best Performance by an Ensemble).

Resource Pack and Workshops available.



REVIEWS

"So much more than theatre, Belongings is an outlet for therapy, a joyful celebration of childhood play, an articulation of resilience and a message that children in care can find their place in the world....The production brilliantly highlights the importance of play as a positive force: a means of self-expression, for learning, companionship, challenge and teamwork." Everything Theatre

www.everything-theatre.co.uk/2023/03/review-belongings-polka-theatre/

"It's brilliantly done, managing to be extremely relatable for children with no experience of the care system while giving them a rare insight into the reality of life in foster care...a trademark Tangled Feet production, blending innovative design, gorgeous lighting, original music and physical theatre to create something very moving.....It's one we will certainly be talking about for quite some time." The Family Stage

www.thefamilystage.co.uk/2023/03/01/review-belongings-tangled-feet-and-rowan-tree-polka-theatre/

"an impressive, commanding & eloquent masterclass in storytelling ... a heart-warming testament to the strength of the human spirit and the importance of compassion & understanding." Plymouth Theatre Review

<https://plymouththeatrereview.co.uk/2024/06/01/belongings-tangled-feet-theatre/>

"Deeply inventive, and the children in the audience were engrossed throughout."

[LouReviews.blog loureviews.blog/2024/02/26/theatre-review-belongings-watermans-centre](https://loureviews.blog/2024/02/26/theatre-review-belongings-watermans-centre)

AUDIENCE FEEDBACK

"Thank you, I felt what you felt" Child

"It reached my heart" Child

"It really displayed the feelings of living in care. Thank you." Child

"A real insight to the feelings young people experience in a care setting"
Foster carer

"Really good to see these topics addressed thoughtfully in the theatre without 'traditional' stereotypes. Specifically visited as both my children are adopted." Adult

"I was moved and greatly touched with the bold and balanced, sensitive and remarkable presentation of the stories... It truly captured the essence of children, their words, their pace and their sharing." Adult

"Thank you for transporting us to another world, for allowing us to explore complex emotions in a safe space." Teacher

"Wow! I cannot express what an impact Belongings had on our children and staff. This is especially so for the children we have in care. They were bursting to tell us how they related to the characters and it has enabled them to communicate with their teachers and friends about their home situations more openly." Teacher

BELONGINGS

TANGLED FEET

PROGRAMMER FEEDBACK

"Belongings is a beautiful show – a delight to watch, with all the visual spectacle you'd expect from a Tangled Feet show, combined with a narrative that draws you in. But for young people, it is way more than that. It has so obviously been made with and for those with experience of the care system, accurately portraying feelings in such an authentic way, that it will resonate and validate those feelings for anyone that has ever felt anxious or different."

Annabel Turpin, ARC Stockton

"It's really rare to find companies where you can 100% trust in the quality of and ethos behind the work, and therefore confidently use the work as a tool to engage with young people who may be new to our organisation – and for the experience to be so much deeper for those young people than a regular theatre trip."

Rebecca Lees, Gulbenkian Theatre



THERAPEUTIC THEATRE

Belongings is a piece of therapeutic theatre made in collaboration with young people who have experienced the care system. The therapeutic theatre model allows us to engage with a way of making work through consultation, workshops and a long-term participatory process with these Creative Advisors. Belongings is both an entertaining and enlightening experience for young audiences and their families but also offers a platform

and space to process complex experiences of childhood. We were inspired by the strength of the Creative Advisors who were able to tell their stories with such insight & creativity. Themes of fear, anger, of feeling lost and wanting to fit in, of the importance of a shared experience & hope are familiar to us all. In sharing their stories our Creative Advisors felt less alone; and hoped in sharing feelings with other young people in the audience, they may feel less alone, too.

TECHNICAL AND FEES (VENUES):

The fee to arts venues (or if arts venues are booking the show to tour local schools) is £1200* plus VAT per day for up to two shows a day over and above any Get In/Tech or Marketing contras.

The true cost of show is closer to £2000 and Tangled Feet use their own funding and fundraising to subsidise it.

All Tangled Feet Policies can be viewed here
tangledfeet.com/about/our-policies

Tangled Feet are signed up to the Anti Racism Touring Rider and Equity's Safe Spaces Statement
equity.org.uk/advice-and-support/dignity-at-work/creating-safe-spaces

- Minimum performance area required: 5.5 x 7 metres.
- Grid height of at least 4m. The production is performed in semi-thrust or end on
- The show cannot take place on a raked stage
- Please advise if you have a floor seating arrangement, EG: bean bags or cushions, we can tour some rugs

- The performance runs at 65 minutes
- We will need at least one person to help unload and load
- Get In 3 hours before first show. The company requires 2 hours between shows on two show days.
- Get Out 2 hours after the show and post-show activities/ meet and greets are finished.
- Detailed Tech Pack can be sent separately
- The production tours with mobile lighting rig on four floor stands to supplement general LX cover from above



BELONGINGS

TANGLED FEET

COMMUNITY / EDUCATIONAL PROGRAMMING

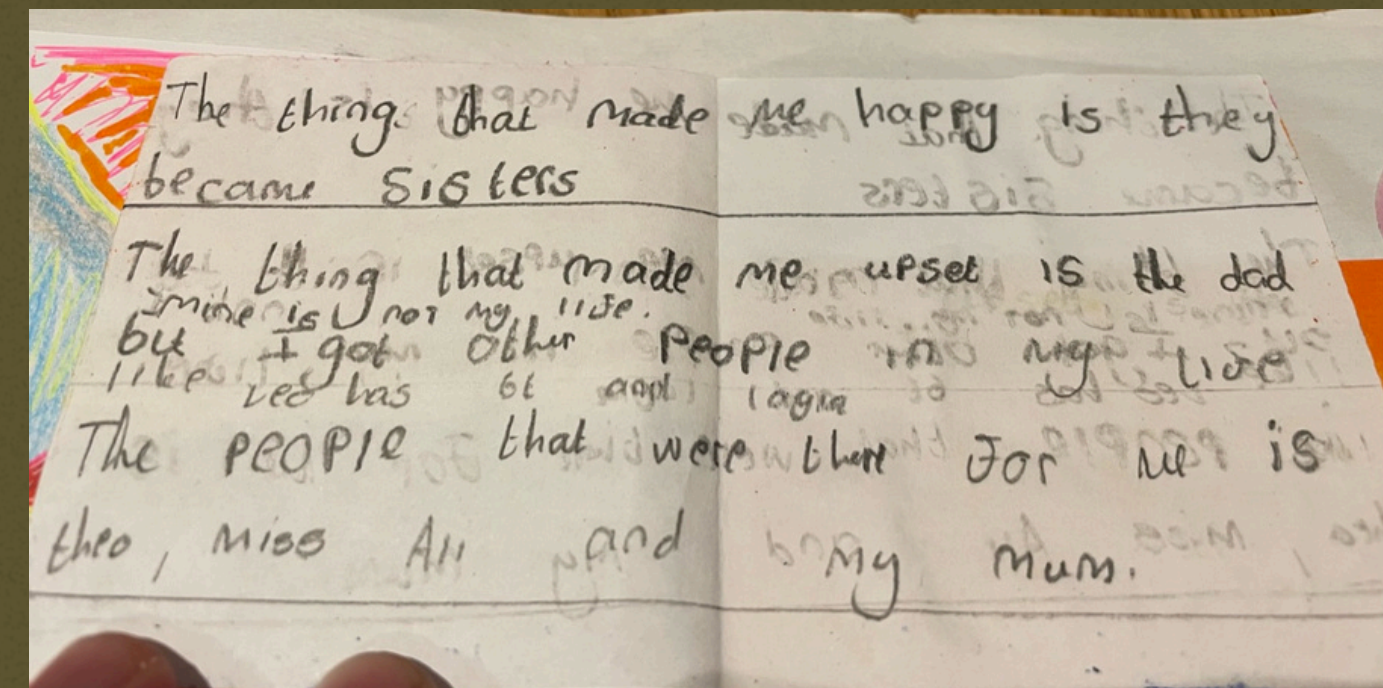
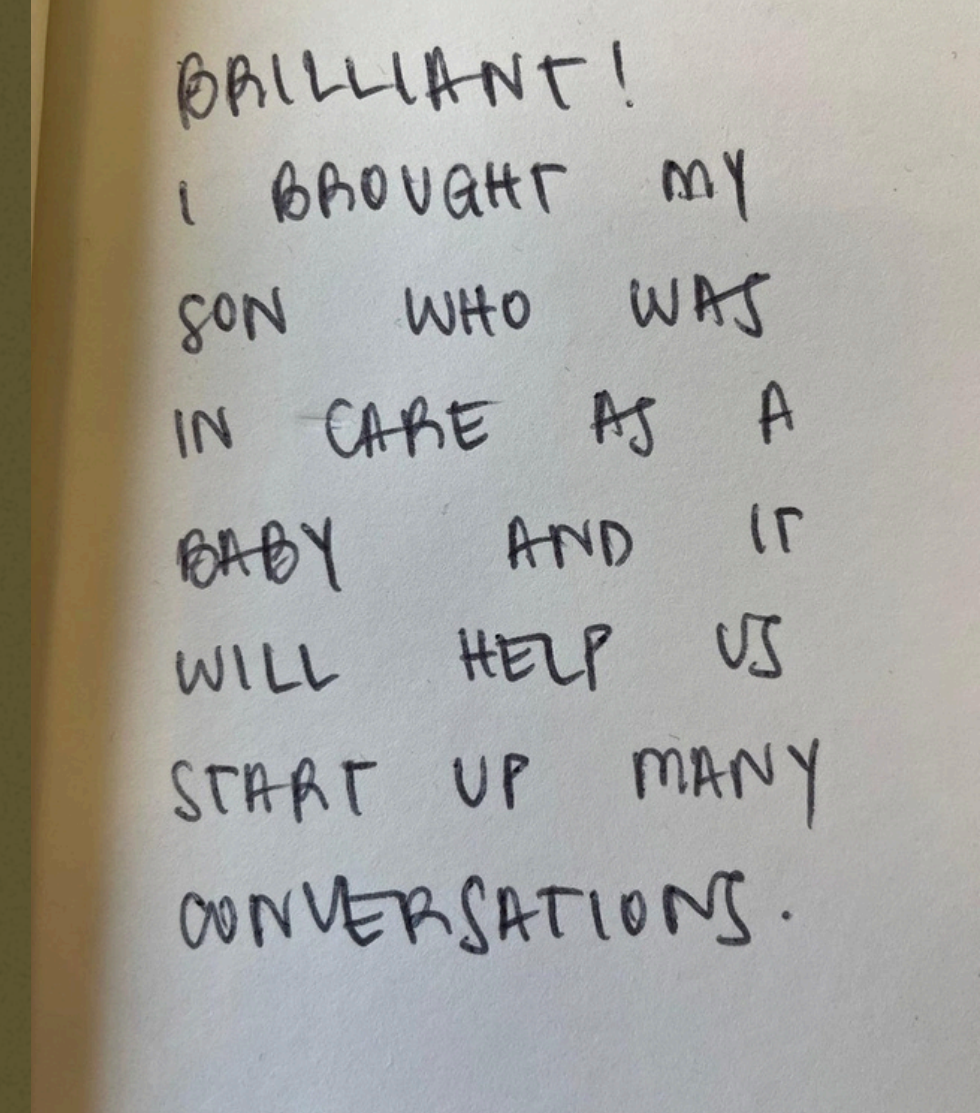
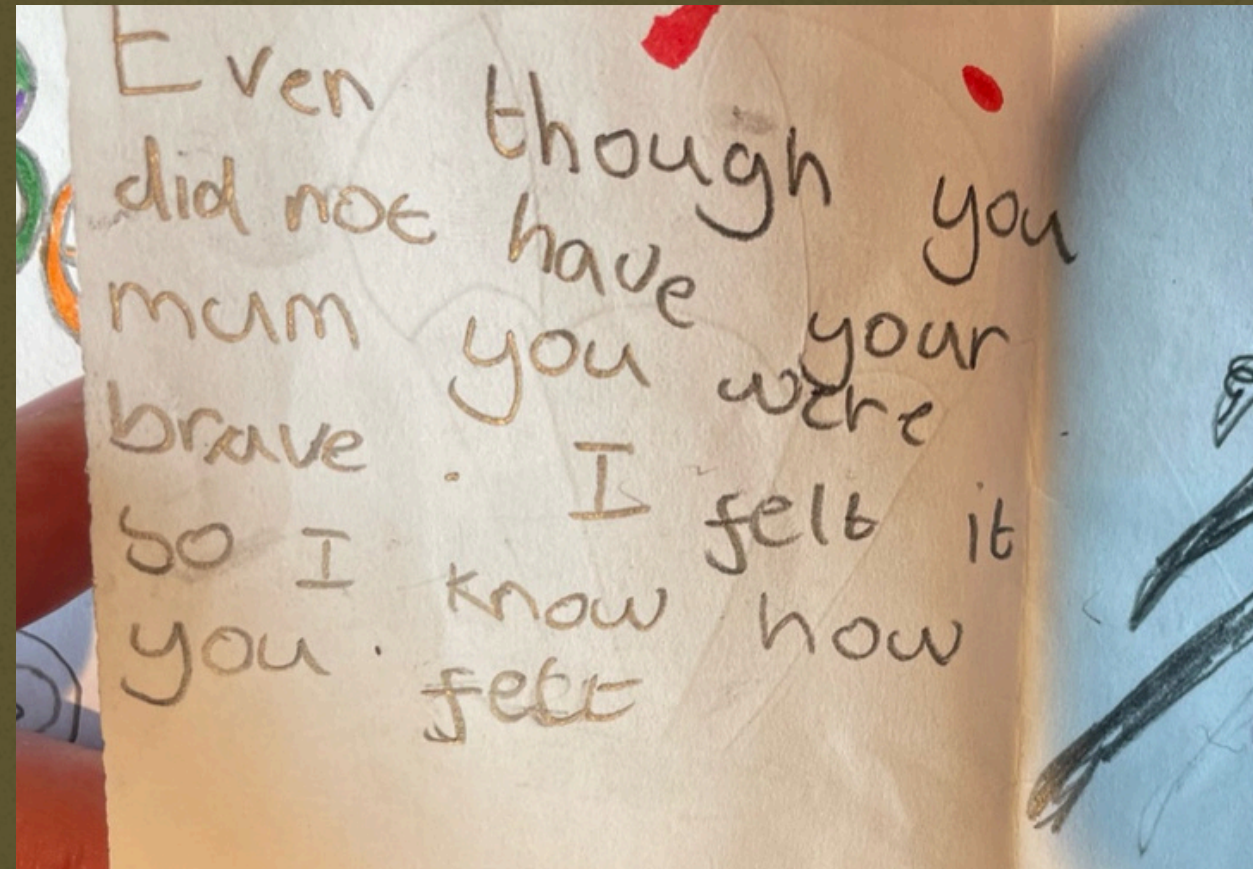
Belongings tours with a mobile lighting and sound rig, the show is designed so that we can deliver the same high production values in a theatre venue or in a school hall if desired.

Booking Contact

Alyson Jones contact@tangledfeet.com

Technical Contact

Josephine Tremelling tremelling.empire@gmail.com



MARKETING AND AUDIENCE DEVELOPMENT



Marketing

Having toured the show across a number of years Tangled Feet have developed strong marketing strategies & resources around the work. Tangled Feet's experienced marketing team will be on hand to support this work reaching your audience This includes:

- Press release and targeted PR campaign
- Locally-targeted social media campaign
- Set of social media assets shared with venues including suggested posts
- Messaging centering award nominations, great reviews & extensive audience feedback as well as celebrating the design, contemporary score & heartfelt story.
- Assets include videos, interviews, blogs, Q&As & audience reaction.
- after the performances
- The Hat Factory and Luton Council hosted a special performance for all the Looked After Children in Luton and the show was performed at their annual Virtual School conference in Bedfordshire

Audience Development

The show offers a chance to represent & connect with the Looked After Children and the connected services community. This is an opportunity to reach new audiences and build long-term relationships that will outlive the performance of the show. TF's Artistic Directors will be available to build a bespoke audience development strategy in collaboration with your venue team. Audience Development activities we've partnered with venues on include:

- Brighton a used the performance as an opportunity to highlight the act of fostering. Foster agencies and the Council had stalls in foyer to share information
- Exeter Northcott used the performance to host a meet up of Southwest National Youth Advocacy - a befriending service for Looked After Children - who all saw the show following their meet up
- The Gulbenkian in Canterbury organised workshops for foster families after the performances
- The Hat Factory and Luton Council hosted a special performance for all the Looked After Children in Luton and the show was performed at their annual Virtual School conference in Bedfordshire

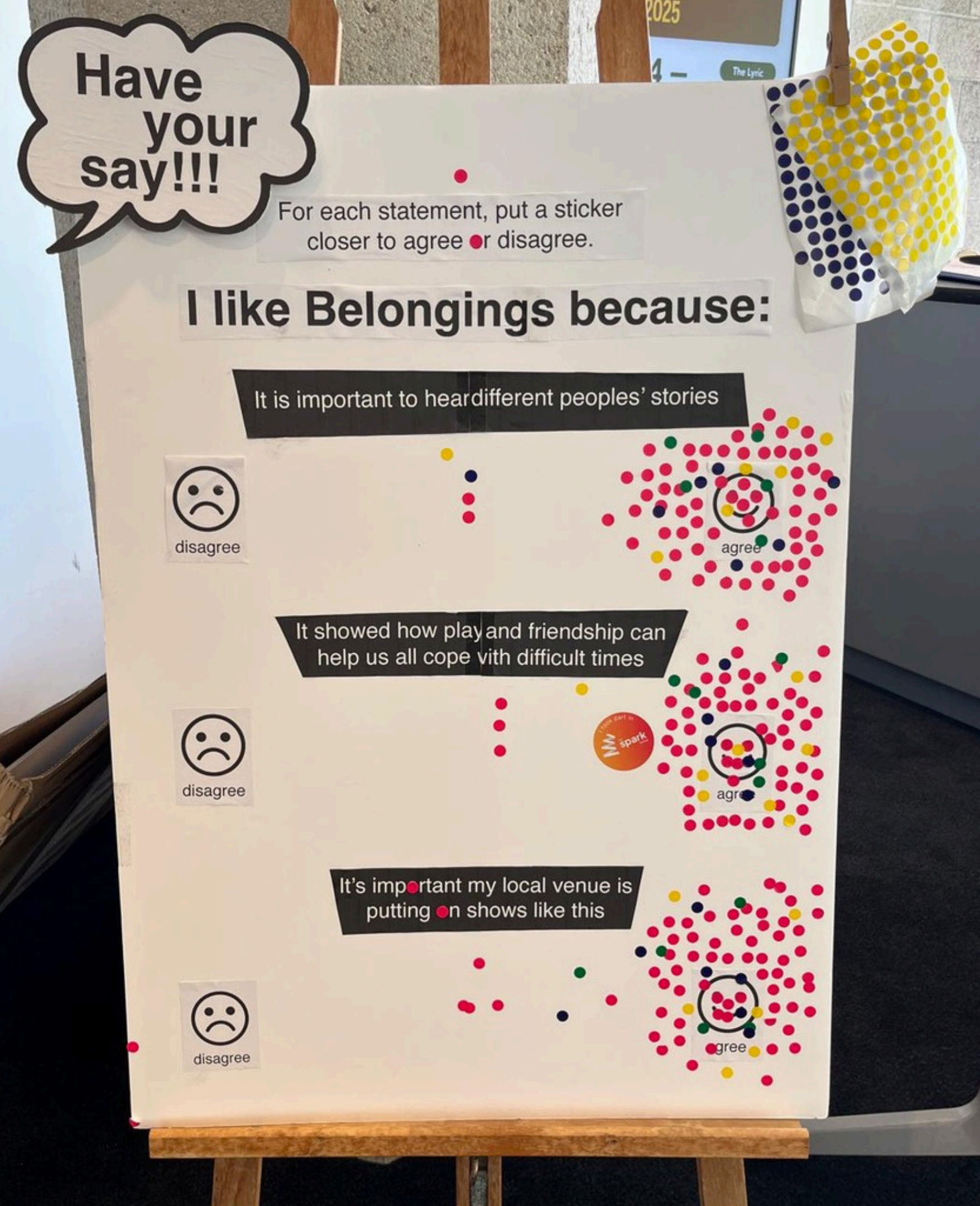
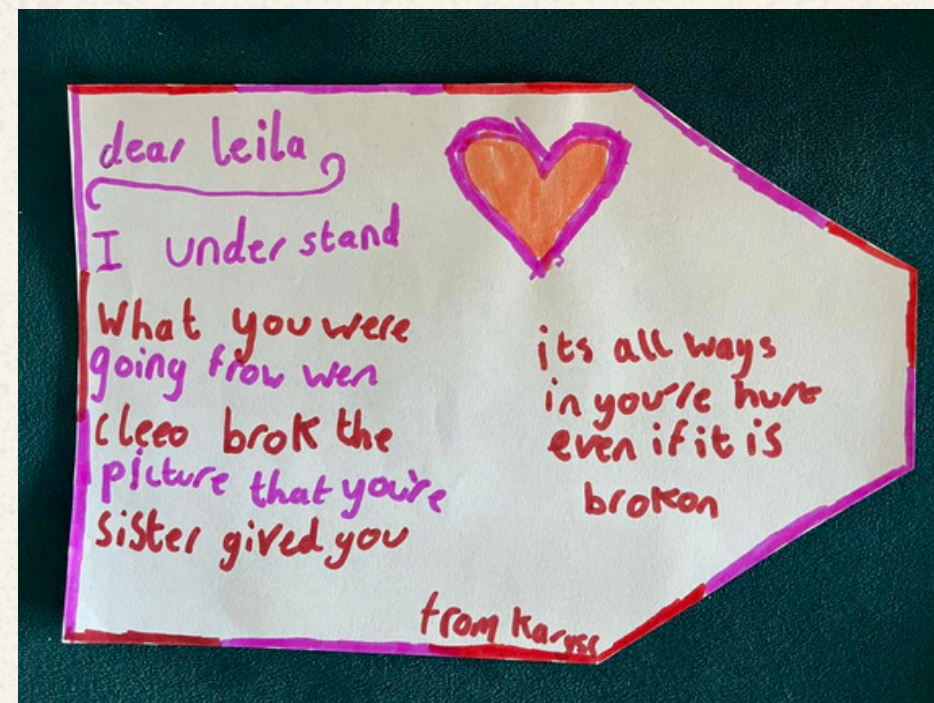
BELONGINGS

TANGLED FEET

"Not only was the show very sensitively and beautifully put together, really highlighting the resilience, creativity and empathy that children in care channel, it has also offered a way to start conversations in the schools, the Council and wider services on how best to support children in care."

Sandy Hamilton Clarke, Luton Virtual Schools

"It meant so much (for my foster boys) to feel represented, understood, authentic and beautiful as well as sad at times. Knowing their story and that of others we have cared for we could see how truly therapeutic this show was and it led to very valuable conversations afterwards." Foster parent





ABOUT TANGLED FEET:

Tangled Feet are a physical theatre ensemble dedicated to devising original, accessible, and innovative work based in Luton. Since 2003, they have made transformative theatre in public spaces, found spaces, educational spaces and theatre buildings. They are part of the Arts Council's Portfolio of core funded companies. www.tangledfeet.com

ABOUT ROWAN TREE:

Rowan Tree Dramatherapy is an organisation that provides dramatherapy to young people & adults across Kent, including for groups of young people in care.



LINKS

Trailer <https://www.youtube.com/watch?v=GGEV8LtJ5eo>

Full Show <https://vimeo.com/tangledfeettheatre/belongingsfullplay>

Big Issue Article <https://www.bigissue.com/culture/theatre/meet-the-young-care-experienced-theatre-makers-breaking-stereotypes-this-care-day>

Further Press: <https://tangledfeet.com/about/press-coverage>



Tangled Feet is a Registered Charity,
no. 1143406 and a registered company no. 05079495